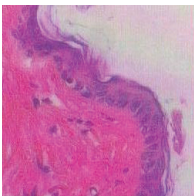


CLINICAL STUDY II

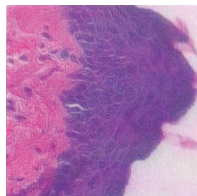
EVALUATION OF A.C.E. CREAM:

- A.C.E. Cream is an effective stimulator of epidermal cells.
- Oil of Olay Original Beauty Fluid does not enhance the epidermal cell proliferation rate.
- When compared to the Retin-A 0.025%, A.C.E. Cream is superior in stimulating epidermal cell growth.

Day 7

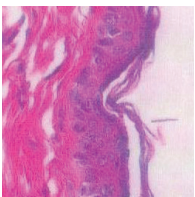


Control

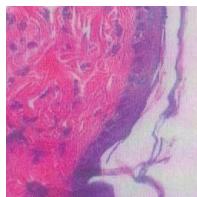


A.C.E. Cream

A.C.E. Cream
Significant thickening of the epidermal is visible. Skin is plump and has characteristics of young, healthy skin.



Retin-A 0.025%



Oil of Olay

Retin-A 0.025
Produced a slight increase of skin cells, but epidermis is damaged.

Oil of Olay
Signs of cell proliferation are not apparent.

CLINICAL STUDY: Comparison of epidermal cell proliferation produced by A.C.E. Cream and two similar topical preparations, Retin-A Cream (0.025%) and Oil of Olay (Original Beauty Fluid)

PRINCIPLE INVESTIGATOR: Peter P. Pugliese, MD, a renowned dermatologist and researcher in the cosmetic industry

VARIABLE: A.C.E. Cream

SUBJECTS: Five in vivo subjects

PROCEDURE: This was a 7-day in vivo study in which topical preparations were applied to the skin of five test subjects.

The following parameter was used to measure the performance of the creams: biopsies stained with hematoxylin and eosin examined under an Olympus BHT 2 microscope. The thickness of the epidermis was measured at a magnification of 400x and twenty fields per slide were counted to find the mean of epidermal cell proliferation.

CONCLUSION: A.C.E. Cream is the most effective in thickening the skin.

RESULTS:

Thickness of Epidermis

Hematoxylin and Eosin 400x, in microns

SUBJECT	A.C.E CREAM	RETIN-A 0.025	OIL OF OLAY
A	50.3	33	19.8
B	47.3	34	21
C	59.5	39	18
D	58.3	39	21
E	51.5	36	21
MEAN	53.4	36.2	20.2